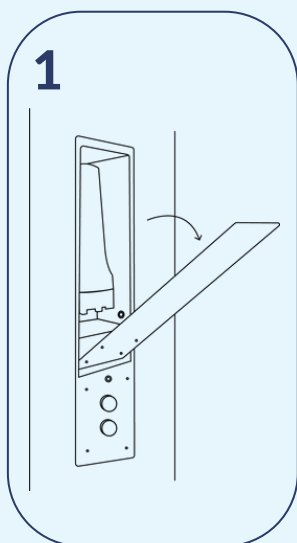
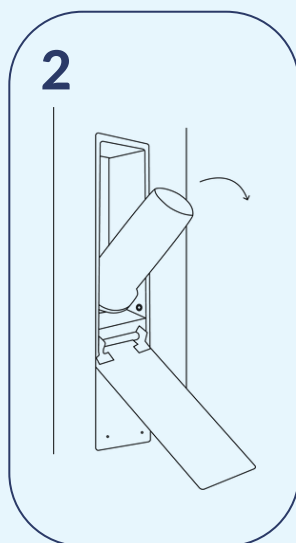


FILTER CHANGE

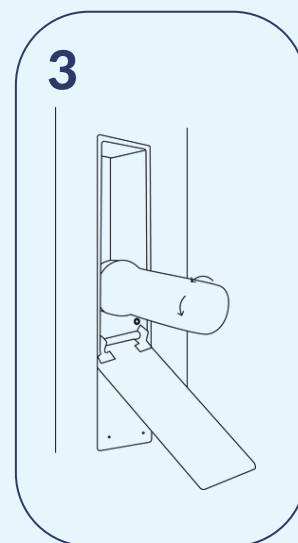
The filter must be changed after 200 showers, however min. twice a month. Changing the filter ensures clean water. Changing the filter takes 30 seconds.



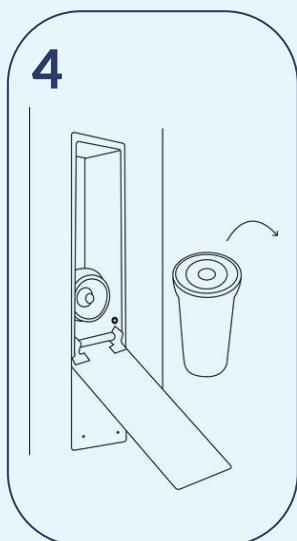
1
Open service hatch 1 by pulling the handle on the right side of the shower panel.



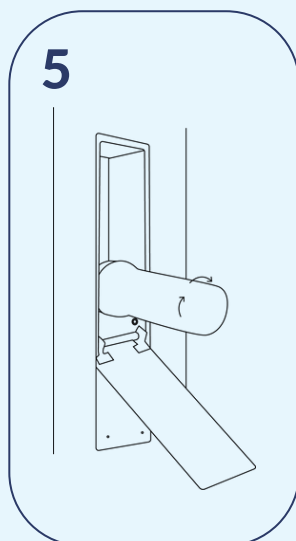
2
Pull the filter container toward you.



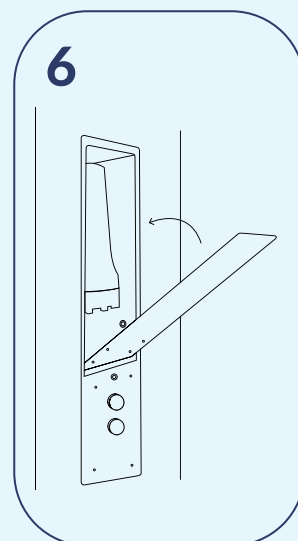
3
Unscrew the filter container by turning it counterclockwise. Do not use tools.



4
Remove the used filter and dispose of it.



5
Rinse the filter container under a tap, and insert a new filter. Screw the filter container back in by turning it clockwise. Do not use tools.



6
Push the service button to register the filter change. Push the filter container up and close the service hatch.